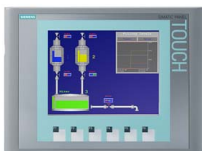


**SIEMENS**

19.02.2022 11:36:44 AM

6AV6647-0AD11-3AX0

SIMATIC HMI KTP600 Basic Color PN, Basic Panel, Key/touch operation, 6" TFT display, 256 colors, PROFINET interface, configurable as of WinCC flexible 2008 SP2 Compact/ WinCC Basic V10.5/ STEP 7 Basic V10.5, contains open-source software, which is provided free of charge see enclosed CD

**Notes**

For this product a successor is available [6AV6647-0AD11-3AX1](#)

List Price [Show prices](#)

Customer Price [Show prices](#)

DataSheet in PDF [Download](#)

Service & Support (Manuals, Certificates, FAQs...) [Download](#)

Accessory (7)**6AV6671-2XC00-0AX0**

Protective film 6" touch devices, Type 3, for TP 177micro, TP 177A, TP 177B, OP 177B, KTP600...

**6AV6671-8XA00-0AX0**

Female connector, 2-pin, type 1 2-pin connector, female Grid size 5.08 mm Further information,...

**6AV6671-8XD00-0AX0**

90 degree bracket adapter, 1:1 90 degree bracket adapter, 1:1 can be screwed together with...

**6AV6671-8XE00-0AX0**

Converter RS422 to RS232 Converter RS422 to RS232, can be screwed together with RS422...

[Show all](#)**Product**

Article Number (Market Facing Number)	6AV6647-0AD11-3AX0
Product Description	SIMATIC HMI KTP600 Basic Color PN, Basic Panel, Key/touch operation, 6" TFT display, 256 colors, PROFINET interface, configurable as of WinCC flexible 2008 SP2 Compact/ WinCC Basic V10.5/ STEP 7 Basic V10.5, contains open-source software, which is provided free of charge see enclosed CD
Product family	Standard devices 1st Generation
Product Lifecycle (PLM)	PM400:Phase Out Started
PLM Effective Date	Product phase-out since: 01.10.2016
Notes	For this product a successor is available 6AV6647-0AD11-3AX1

Successor information

Successor	6AV6647-0AD11-3AX1
Successor Description	SIMATIC HMI KTP600 Basic Color PN, Basic Panel, key/touch operation, 6" TFT display, 256 colors, PROFINET interface, configurable as of WinCC flexible 2008 SP2 Compact/ WinCC Basic V10.5/ STEP 7 Basic V10.5, contains open-source software, which is provided free of charge see enclosed CD

Price data

Region Specific PriceGroup / Headquarter Price Group	2AP / 2AP
List Price	Show prices
Customer Price	Show prices
Surcharge for Raw Materials	None
Metal Factor	None

Delivery information

Export Control Regulations	AL : N / ECCN : EAR99H
Standard lead time ex-works	20 Day/Days
Net Weight (kg)	1,362 Kg
Packaging Dimension	19,20 x 25,80 x 8,80
Package size unit of measure	CM
Quantity Unit	1 Piece
Packaging Quantity	1

Additional Product Information

EAN	6940408100565
UPC	Not available
Commodity Code	85371098
LKZ_FDB/ CatalogID	ST9.80

Product Group	2264
Group Code	R141
Country of origin	Germany
Compliance with the substance restrictions according to RoHS directive	Since: 31.03.2009
Product class	A: Standard product which is a stock item could be returned within the returns guidelines/period.
WEEE (2012/19/EU) Take-Back Obligation	Yes
REACH Art. 33 Duty to inform according to the current list of candidates	

Classifications

	Version	Classification
eClass	6	27-24-23-02
eClass	7.1	27-24-23-02
eClass	8	27-24-23-02
eClass	9	27-33-02-01
eClass	9.1	27-33-02-01
ETIM	5	EC001412
ETIM	6	EC001412
ETIM	7	EC001412
ETIM	8	EC001412
IDEA	4	6607
UNSPSC	14	43-23-36-03
UNSPSC	15	43-21-15-06