

Product datasheet

Specifications



Contactors, TeSys Deca, 3P(3NO), AC-3/3e, <=440V, 9A, 220V AC 50/60Hz coil, screw clamp terminals

LC1D09M7

Main

| | |
|--------------------------------|---|
| Range of product | TeSys Deca |
| Product or component type | Contactors |
| Device short name | LC1D |
| Contactors application | Motor control Resistive load |
| Utilisation category | AC-4 AC-3 AC-1 AC-3e |
| Poles description | 3P |
| [Ue] rated operational voltage | Power circuit: <= 690 V AC 25...400 Hz Power circuit: <= 300 V DC |
| [Ie] rated operational current | 9 A (at <60 °C) at <= 440 V AC AC-3 for power circuit 25 A (at <60 °C) at <= 440 V AC AC-1 for power circuit 9 A (at <60 °C) at <= 440 V AC AC-3e for power circuit |
| [Uc] control circuit voltage | 220 V AC 50/60 Hz |

Complementary

| | |
|---|---|
| Motor power kW | 2.2 kW at 220...230 V AC 50/60 Hz (AC-3) 4 kW at 380...400 V AC 50/60 Hz (AC-3) 4 kW at 415...440 V AC 50/60 Hz (AC-3) 5.5 kW at 500 V AC 50/60 Hz (AC-3) 5.5 kW at 660...690 V AC 50/60 Hz (AC-3) 2.2 kW at 400 V AC 50/60 Hz (AC-4) 2.2 kW at 220...230 V AC 50/60 Hz (AC-3e) 4 kW at 380...400 V AC 50/60 Hz (AC-3e) 4 kW at 415...440 V AC 50/60 Hz (AC-3e) 5.5 kW at 500 V AC 50/60 Hz (AC-3e) 5.5 kW at 660...690 V AC 50/60 Hz (AC-3e) |
| Motor power hp | 1 hp at 230/240 V AC 50/60 Hz for 1 phase motors 2 hp at 200/208 V AC 50/60 Hz for 3 phases motors 2 hp at 230/240 V AC 50/60 Hz for 3 phases motors 5 hp at 460/480 V AC 50/60 Hz for 3 phases motors 7.5 hp at 575/600 V AC 50/60 Hz for 3 phases motors 0.33 hp at 115 V AC 50/60 Hz for 1 phase motors |
| Compatibility code | LC1D |
| Pole contact composition | 3 NO |
| Protective cover | With |
| [Ith] conventional free air thermal current | 25 A (at 60 °C) for power circuit 10 A (at 60 °C) for signalling circuit |
| Irms rated making capacity | 250 A at 440 V for power circuit conforming to IEC 60947 140 A AC for signalling circuit conforming to IEC 60947-5-1 250 A DC for signalling circuit conforming to IEC 60947-5-1 |
| Rated breaking capacity | 250 A at 440 V for power circuit conforming to IEC 60947 |

| | |
|---|--|
| [Icw] rated short-time withstand current | 105 A 40 °C - 10 s for power circuit 210 A 40 °C - 1 s for power circuit 30 A 40 °C - 10 min for power circuit 61 A 40 °C - 1 min for power circuit 100 A - 1 s for signalling circuit 120 A - 500 ms for signalling circuit 140 A - 100 ms for signalling circuit |
| Associated fuse rating | 10 A gG for signalling circuit conforming to IEC 60947-5-1 25 A gG at <= 690 V coordination type 1 for power circuit 20 A gG at <= 690 V coordination type 2 for power circuit |
| Average impedance | 2.5 mOhm - Ith 25 A 50 Hz for power circuit |
| Power dissipation per pole | 1.56 W AC-1 0.2 W AC-3 0.2 W AC-3e |
| [Ui] rated insulation voltage | Power circuit: 690 V conforming to IEC 60947-4-1 Power circuit: 600 V CSA certified Power circuit: 600 V UL certified Signalling circuit: 690 V conforming to IEC 60947-1 Signalling circuit: 600 V CSA certified Signalling circuit: 600 V UL certified |
| overvoltage category | III |
| pollution degree | 3 |
| [Uimp] rated impulse withstand voltage | 6 kV conforming to IEC 60947 |
| Safety reliability level | B10d = 1369863 cycles contactor with nominal load conforming to EN/ISO 13849-1 B10d = 20000000 cycles contactor with mechanical load conforming to EN/ISO 13849-1 |
| Mechanical durability | 15 Mcycles |
| Electrical durability | 0.6 Mcycles 25 A AC-1 at Ue <= 440 V 2 Mcycles 9 A AC-3 at Ue <= 440 V 2 Mcycles 9 A AC-3e at Ue <= 440 V |
| Control circuit type | AC at 50/60 Hz standard |
| Coil technology | Without built-in suppressor module |
| Control circuit voltage limits | 0.3...0.6 Uc (-40...70 °C):drop-out AC 50/60 Hz 0.8...1.1 Uc (-40...60 °C):operational AC 50 Hz 0.85...1.1 Uc (-40...60 °C):operational AC 60 Hz 1...1.1 Uc (60...70 °C):operational AC 50/60 Hz |
| Inrush power in VA | 70 VA 60 Hz cos phi 0.75 (at 20 °C) 70 VA 50 Hz cos phi 0.75 (at 20 °C) |
| Hold-in power consumption in VA | 7.5 VA 60 Hz cos phi 0.3 (at 20 °C) 7 VA 50 Hz cos phi 0.3 (at 20 °C) |
| Heat dissipation | 2...3 W at 50/60 Hz |
| Operating time | 12...22 ms closing 4...19 ms opening |
| Maximum operating rate | 3600 cyc/h at 60 °C |

| | |
|--------------------------------------|---|
| Connections - terminals | <p>Power circuit: screw clamp terminals 1 1...4 mm² - cable stiffness: flexible without cable end</p> <p>Power circuit: screw clamp terminals 2 1...4 mm² - cable stiffness: flexible without cable end</p> <p>Power circuit: screw clamp terminals 1 1...4 mm² - cable stiffness: flexible with cable end</p> <p>Power circuit: screw clamp terminals 2 1...2.5 mm² - cable stiffness: flexible with cable end</p> <p>Power circuit: screw clamp terminals 1 1...4 mm² - cable stiffness: solid without cable end</p> <p>Power circuit: screw clamp terminals 2 1...4 mm² - cable stiffness: solid without cable end</p> <p>Control circuit: screw clamp terminals 1 1...4 mm² - cable stiffness: flexible without cable end</p> <p>Control circuit: screw clamp terminals 2 1...4 mm² - cable stiffness: flexible without cable end</p> <p>Control circuit: screw clamp terminals 1 1...4 mm² - cable stiffness: flexible with cable end</p> <p>Control circuit: screw clamp terminals 2 1...2.5 mm² - cable stiffness: flexible with cable end</p> <p>Control circuit: screw clamp terminals 1 1...4 mm² - cable stiffness: solid without cable end</p> <p>Control circuit: screw clamp terminals 2 1...4 mm² - cable stiffness: solid without cable end</p> |
| Tightening torque | <p>Power circuit: 1.7 N.m - on screw clamp terminals - with screwdriver flat Ø 6 mm</p> <p>Power circuit: 1.7 N.m - on screw clamp terminals - with screwdriver Philips No 2</p> <p>Control circuit: 1.7 N.m - on screw clamp terminals - with screwdriver flat Ø 6 mm</p> <p>Control circuit: 1.7 N.m - on screw clamp terminals - with screwdriver Philips No 2</p> <p>Control circuit: 1.7 N.m - on screw clamp terminals - with screwdriver pozidriv No 2</p> <p>Power circuit: 1.7 N.m - on screw clamp terminals - with screwdriver pozidriv No 2</p> |
| Auxiliary contact composition | 1 NO + 1 NC |
| Auxiliary contacts type | <p>type mechanically linked 1 NO + 1 NC conforming to IEC 60947-5-1</p> <p>type mirror contact 1 NC conforming to IEC 60947-4-1</p> |
| Signalling circuit frequency | 25...400 Hz |
| Minimum switching voltage | 17 V for signalling circuit |
| Minimum switching current | 5 mA for signalling circuit |
| Insulation resistance | > 10 MOhm for signalling circuit |
| Non-overlap time | <p>1.5 ms on de-energisation between NC and NO contact</p> <p>1.5 ms on energisation between NC and NO contact</p> |
| Mounting support | <p>Plate</p> <p>Rail</p> |

Environment

| | |
|--------------------------------|--|
| Standards | <p>CSA C22.2 No 14</p> <p>EN 60947-4-1</p> <p>EN 60947-5-1</p> <p>IEC 60947-4-1</p> <p>IEC 60947-5-1</p> <p>UL 60947-4-1</p> <p>IEC 60335-1:Clause 30.2</p> <p>IEC 60335-2-40:Annex JJ</p> <p>UL 60335-2-40:Annex JJ</p> <p>CSA C22.2 No 60947-4-1</p> |
| Product certifications | <p>UL</p> <p>CCC</p> <p>CSA</p> <p>Marine</p> <p>UKCA</p> <p>EAC</p> <p>CB Scheme</p> |
| IP degree of protection | IP20 front face conforming to IEC 60529 |
| Protective treatment | TH conforming to IEC 60068-2-30 |
| Climatic withstand | <p>conforming to IACS E10 exposure to damp heat</p> <p>conforming to IEC 60947-1 Annex Q category D exposure to damp heat</p> |

| | |
|--|--|
| Permissible ambient air temperature around the device | -40...60 °C 60...70 °C with derating |
| Operating altitude | 0...3000 m |
| Fire resistance | 850 °C conforming to IEC 60695-2-1 |
| Flame retardance | V1 conforming to UL 94 |
| Mechanical robustness | Vibrations contactor open (2 Gn, 5...300 Hz) Vibrations contactor closed (4 Gn, 5...300 Hz) Shocks contactor open (10 Gn for 11 ms) Shocks contactor closed (15 Gn for 11 ms) |
| Height | 77 mm |
| Width | 45 mm |
| Depth | 86 mm |
| Net weight | 0.32 kg |

Packing Units

| | |
|-------------------------------------|------------|
| Unit Type of Package 1 | PCE |
| Number of Units in Package 1 | 1 |
| Package 1 Height | 5.000 cm |
| Package 1 Width | 9.200 cm |
| Package 1 Length | 11.500 cm |
| Package 1 Weight | 350.000 g |
| Unit Type of Package 2 | S02 |
| Number of Units in Package 2 | 20 |
| Package 2 Height | 15.000 cm |
| Package 2 Width | 30.000 cm |
| Package 2 Length | 40.000 cm |
| Package 2 Weight | 7.282 kg |
| Unit Type of Package 3 | P06 |
| Number of Units in Package 3 | 320 |
| Package 3 Height | 75.000 cm |
| Package 3 Width | 60.000 cm |
| Package 3 Length | 80.000 cm |
| Package 3 Weight | 123.500 kg |

Contractual warranty

| | |
|-----------------|-----------|
| Warranty | 18 months |
|-----------------|-----------|

Environmental Data

Schneider Electric aims to achieve Net Zero status by 2050 through supply chain partnerships, lower impact materials, and circularity via our ongoing “Use Better, Use Longer, Use Again” campaign to extend product lifetimes and recyclability.

[Environmental Data explained >](#)

[How we assess product sustainability >](#)

Environmental footprint

| | |
|---|----|
| Carbon footprint (kg.eq.CO2 per CR, Total Life cycle) | 18 |
|---|----|

| | |
|--------------------------|---|
| Environmental Disclosure | Product Environmental Profile |
|--------------------------|---|

Use Better

Materials and Substances

| | |
|--|-----|
| Packaging made with recycled cardboard | Yes |
|--|-----|

| | |
|--------------------------------------|-----|
| Packaging without single use plastic | Yes |
|--------------------------------------|-----|

| | |
|-----------------------------------|-----------|
| EU RoHS Directive | Compliant |
|-----------------------------------|-----------|

| | |
|------------------|-----------------------------------|
| REACH Regulation | REACH Declaration |
|------------------|-----------------------------------|

| | |
|-----------------------|--|
| China RoHS Regulation | China RoHS declaration |
|-----------------------|--|

| | |
|----------|-----|
| PVC free | Yes |
|----------|-----|

Use Again

Repack and remanufacture

| | |
|---------------------|---|
| Circularity Profile | End of Life Information |
|---------------------|---|

WEEE



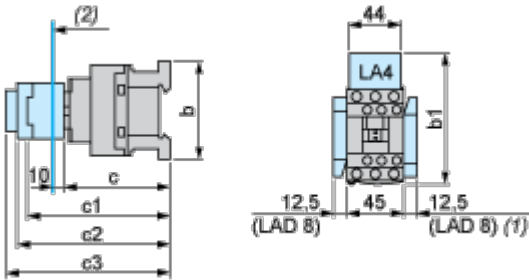
The product must be disposed on European Union markets following specific waste collection and never end up in rubbish bins

Take-back

No

Dimensions Drawings

Dimensions

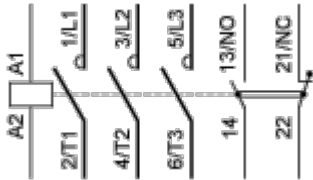


- (1) Including LAD 4BB
- (2) Minimum electrical clearance

| LC1 | | D09...D18 | D093...D123 | D099...D129 |
|------------|------------------------------------|--------------------|--------------------|----------------------|
| b | without add-on blocks | 77 | 99 | 80 |
| b1 | with LAD 4BB | 94 | 107 | 95.5 |
| | with LA4 D•2 | 110 ⁽¹⁾ | 123 ⁽¹⁾ | 111.5 ⁽¹⁾ |
| | with LA4 DF, DT | 119 ⁽¹⁾ | 132 ⁽¹⁾ | 120.5 ⁽¹⁾ |
| | with LA4 DW, DL | 126 ⁽¹⁾ | 139 ⁽¹⁾ | 127.5 ⁽¹⁾ |
| c | without cover or add-on blocks | 84 | 84 | 84 |
| | with cover, without add-on blocks | 86 | 86 | 86 |
| c1 | with LAD N or C (2 or 4 contacts) | 117 | 117 | 117 |
| c2 | with LA6 DK10, LAD 6K10 | 129 | 129 | 129 |
| c3 | with LAD T, R, S | 137 | 137 | 137 |
| | with LAD T, R, S and sealing cover | 141 | 141 | 141 |
| (1) | Including LAD 4BB. | | | |

Connections and Schema

Wiring



Offer Marketing Illustration

Product benefits / Features

TeSys Deca
Contactors

LC1D09M7



Rated operation current (AC3)
9A

Number of poles
3P (3NO)

Auxiliary contact composition
1 NO + 1 NC

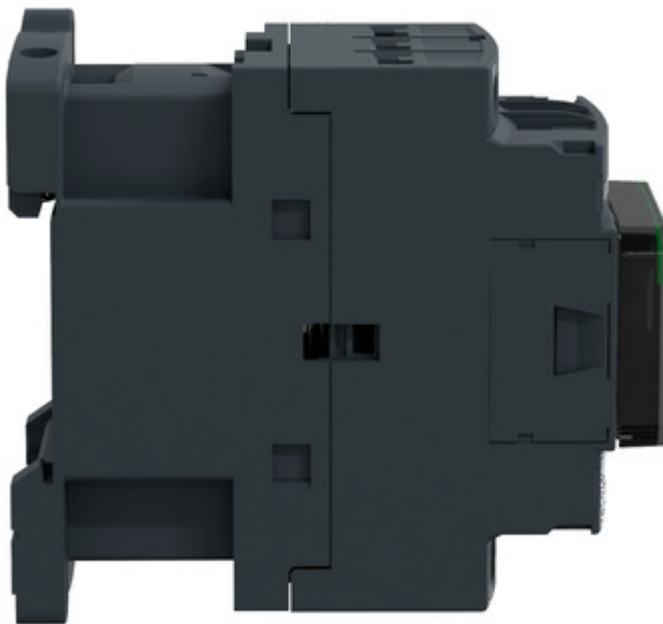
Coil voltage
220 V AC

Network frequency
50/60Hz

The image shows a TeSys Deca contactor, model LC1D09M7, which is a 3-pole contactor with 1 normally open (NO) and 1 normally closed (NC) auxiliary contact. It is designed for a rated operation current of 9A at 220V AC and 50/60Hz. The contactor is black with a green label that reads 'TeSys Schneider Electric'. The label also includes the model number 'LC1D09M7' and the 'Control' section. The contactor has three main terminals (1, 2, 3) and two auxiliary terminals (13, 14 for NO and 21, 22 for NC). The coil terminals are labeled A1 and A2. The contactor is shown from a front-left perspective.

Image of product / Alternate images

Alternative



Technical Illustration

Assembly's dimensions

