

Product datasheet

Specifications



TeSys D contactor - 3P(3 NO) - AC-3 - ≤ 440 V 38 A - 220 V AC 50/60 Hz coil

LC1D38M7

Main

Range	TeSys TeSys Deca
Range of product	TeSys Deca
Product or component type	Contactors
Device short name	LC1D
Contactors application	Motor control Resistive load
Utilisation category	AC-4 AC-1 AC-3 AC-3e
Poles description	3P
[Ue] rated operational voltage	Power circuit: ≤ 690 V AC 25...400 Hz Power circuit: ≤ 300 V DC
[Ie] rated operational current	50 A (at ≤ 60 °C) at ≤ 440 V AC AC-1 for power circuit 38 A (at ≤ 60 °C) at ≤ 440 V AC AC-3 for power circuit 38 A (at ≤ 60 °C) at ≤ 440 V AC AC-3e for power circuit
[Uc] control circuit voltage	220 V AC 50/60 Hz

Complementary

Motor power kW	18.5 kW at 500 V AC 50/60 Hz (AC-3) 18.5 kW at 660...690 V AC 50/60 Hz (AC-3) 7.5 kW at 400 V AC 50/60 Hz (AC-4) 18.5 kW at 380...400 V AC 50/60 Hz (AC-3) 9 kW at 220...230 V AC 50/60 Hz (AC-3) 18.5 kW at 415...440 V AC 50/60 Hz (AC-3) 18.5 kW at 500 V AC 50/60 Hz (AC-3e) 18.5 kW at 660...690 V AC 50/60 Hz (AC-3e) 18.5 kW at 380...400 V AC 50/60 Hz (AC-3e) 9 kW at 220...230 V AC 50/60 Hz (AC-3e) 18.5 kW at 415...440 V AC 50/60 Hz (AC-3e)
Motor power hp	10 hp at 230/240 V AC 50/60 Hz for 3 phases motors 10 hp at 200/208 V AC 50/60 Hz for 3 phases motors 5 hp at 240 V AC 50/60 Hz for 1 phase motors 20 hp at 480 V AC 50/60 Hz for 3 phases motors 25 hp at 600 V AC 50/60 Hz for 3 phases motors
Compatibility code	LC1D
Pole contact composition	3 NO
Protective cover	With
[Ith] conventional free air thermal current	10 A (at 60 °C) for signalling circuit 50 A (at 60 °C) for power circuit
Irms rated making capacity	140 A AC for signalling circuit conforming to IEC 60947-5-1 250 A DC for signalling circuit conforming to IEC 60947-5-1 550 A at 440 V for power circuit conforming to IEC 60947

Rated breaking capacity	550 A at 440 V for power circuit conforming to IEC 60947
[Icw] rated short-time withstand current	60 A 40 °C - 10 min for power circuit 430 A 40 °C - 1 s for power circuit 150 A 40 °C - 1 min for power circuit 310 A 40 °C - 10 s for power circuit 100 A - 1 s for signalling circuit 120 A - 500 ms for signalling circuit 140 A - 100 ms for signalling circuit
Associated fuse rating	10 A gG for signalling circuit conforming to IEC 60947-5-1 63 A gG at <= 690 V coordination type 1 for power circuit 63 A gG at <= 690 V coordination type 2 for power circuit
Average impedance	2 mOhm - Ith 50 A 50 Hz for power circuit
Power dissipation per pole	5 W AC-1 3 W AC-3 3 W AC-3e
[Ui] rated insulation voltage	Power circuit: 600 V CSA certified Power circuit: 600 V UL certified Signalling circuit: 690 V conforming to IEC 60947-1 Signalling circuit: 600 V CSA certified Signalling circuit: 600 V UL certified Power circuit: 690 V conforming to IEC 60947-4-1
overvoltage category	III
pollution degree	3
[Uimp] rated impulse withstand voltage	6 kV conforming to IEC 60947
Safety reliability level	B10d = 1369863 cycles contactor with nominal load conforming to EN/ISO 13849-1 B10d = 20000000 cycles contactor with mechanical load conforming to EN/ISO 13849-1
Mechanical durability	15 Mcycles
Electrical durability	1.4 Mcycles 50 A AC-1 at Ue <= 440 V 1.4 Mcycles 38 A AC-3 at Ue <= 440 V 1.4 Mcycles 38 A AC-3e at Ue <= 440 V
Control circuit type	AC at 50/60 Hz
Coil technology	Without built-in suppressor module
Control circuit voltage limits	0.3...0.6 Uc (-40...70 °C):drop-out AC 50/60 Hz 0.8...1.1 Uc (-40...60 °C):operational AC 50 Hz 0.85...1.1 Uc (-40...60 °C):operational AC 60 Hz 1...1.1 Uc (60...70 °C):operational AC 50/60 Hz
Inrush power in VA	70 VA 60 Hz cos phi 0.75 (at 20 °C) 70 VA 50 Hz cos phi 0.75 (at 20 °C)
Hold-in power consumption in VA	7.5 VA 60 Hz cos phi 0.3 (at 20 °C) 7 VA 50 Hz cos phi 0.3 (at 20 °C)
Heat dissipation	2...3 W at 50/60 Hz
Operating time	4...19 ms opening 12...22 ms closing
Maximum operating rate	3600 cyc/h at 60 °C

Connections - terminals	Control circuit: screw clamp terminals 2 1...2.5 mm ² - cable stiffness: flexible with cable end
	Control circuit: screw clamp terminals 1 1...4 mm ² - cable stiffness: flexible without cable end
	Control circuit: screw clamp terminals 2 1...4 mm ² - cable stiffness: flexible without cable end
	Control circuit: screw clamp terminals 1 1...4 mm ² - cable stiffness: flexible with cable end
	Control circuit: screw clamp terminals 1 1...4 mm ² - cable stiffness: solid without cable end
	Control circuit: screw clamp terminals 2 1...4 mm ² - cable stiffness: solid without cable end
	Power circuit: screw clamp terminals 1 2.5...10 mm ² - cable stiffness: flexible without cable end
	Power circuit: screw clamp terminals 2 2.5...10 mm ² - cable stiffness: flexible without cable end
	Power circuit: screw clamp terminals 1 1...10 mm ² - cable stiffness: flexible with cable end
	Power circuit: screw clamp terminals 2 1.5...6 mm ² - cable stiffness: flexible with cable end
	Power circuit: screw clamp terminals 1 1.5...10 mm ² - cable stiffness: solid without cable end
	Power circuit: screw clamp terminals 2 2.5...10 mm ² - cable stiffness: solid without cable end

Tightening torque	Control circuit: 1.7 N.m - on screw clamp terminals - with screwdriver flat Ø 6 mm
	Control circuit: 1.7 N.m - on screw clamp terminals - with screwdriver Philips No 2
	Power circuit: 2.5 N.m - on screw clamp terminals - with screwdriver flat Ø 6 mm
	Power circuit: 2.5 N.m - on screw clamp terminals - with screwdriver Philips No 2
	Control circuit: 1.7 N.m - on screw clamp terminals - with screwdriver pozidriv No 2

Auxiliary contact composition	1 NO + 1 NC
Auxiliary contacts type	type mechanically linked 1 NO + 1 NC conforming to IEC 60947-5-1 type mirror contact 1 NC conforming to IEC 60947-4-1
Signalling circuit frequency	25...400 Hz
Minimum switching voltage	17 V for signalling circuit
Minimum switching current	5 mA for signalling circuit
Insulation resistance	> 10 MOhm for signalling circuit
Non-overlap time	1.5 ms on de-energisation between NC and NO contact
	1.5 ms on energisation between NC and NO contact
Mounting support	Rail
	Plate

Environment

Standards	CSA C22.2 No 14
	EN 60947-4-1
	EN 60947-5-1
	IEC 60947-4-1
	IEC 60947-5-1
	UL 60947-4-1
	IEC 60335-1:Clause 30.2
	IEC 60335-2-40:Annex JJ
	UL 60335-2-40:Annex JJ
	CSA C22.2 No 60947-4-1
Product certifications	UL
	CCC
	CSA
	Marine
	UKCA
IP degree of protection	EAC
	CB Scheme
	IP20 front face conforming to IEC 60529
Protective treatment	TH conforming to IEC 60068-2-30
Climatic withstand	conforming to IACS E10 exposure to damp heat
	conforming to IEC 60947-1 Annex Q category D exposure to damp heat

Permissible ambient air temperature around the device	-40...60 °C 60...70 °C with derating
Operating altitude	0...3000 m
Fire resistance	850 °C conforming to IEC 60695-2-1
Flame retardance	V1 conforming to UL 94
Mechanical robustness	Vibrations contactor open (2 Gn, 5...300 Hz) Vibrations contactor closed (4 Gn, 5...300 Hz) Shocks contactor closed (15 Gn for 11 ms) Shocks contactor open (8 Gn for 11 ms)
Height	85 mm
Width	45 mm
Depth	92 mm
Net weight	0.38 kg

Packing Units

Unit Type of Package 1	PCE
Number of Units in Package 1	1
Package 1 Height	5 cm
Package 1 Width	9.3 cm
Package 1 Length	11.5 cm
Package 1 Weight	413 g
Unit Type of Package 2	S02
Number of Units in Package 2	20
Package 2 Height	15 cm
Package 2 Width	30 cm
Package 2 Length	40 cm
Package 2 Weight	8.576 kg
Unit Type of Package 3	P06
Number of Units in Package 3	160
Package 3 Height	45 cm
Package 3 Width	60 cm
Package 3 Length	80 cm
Package 3 Weight	76.608 kg

Contractual warranty

Warranty	18 months
-----------------	-----------

Environmental Data

Schneider Electric aims to achieve Net Zero status by 2050 through supply chain partnerships, lower impact materials, and circularity via our ongoing “Use Better, Use Longer, Use Again” campaign to extend product lifetimes and recyclability.

[Environmental Data explained >](#)

[How we assess product sustainability >](#)

Environmental footprint

Carbon footprint (kg.eq.CO2 per CR, Total Life cycle)	174
---	-----

Environmental Disclosure	Product Environmental Profile
--------------------------	---

Use Better

Materials and Substances

Packaging made with recycled cardboard	Yes
--	-----

Packaging without single use plastic	Yes
--------------------------------------	-----

EU RoHS Directive	Compliant
-----------------------------------	-----------

REACH Regulation	REACH Declaration
------------------	-----------------------------------

China RoHS Regulation	China RoHS declaration
-----------------------	--

PVC free	Yes
----------	-----

Use Again

Repack and remanufacture

Circularity Profile	End of Life Information
---------------------	---

WEEE



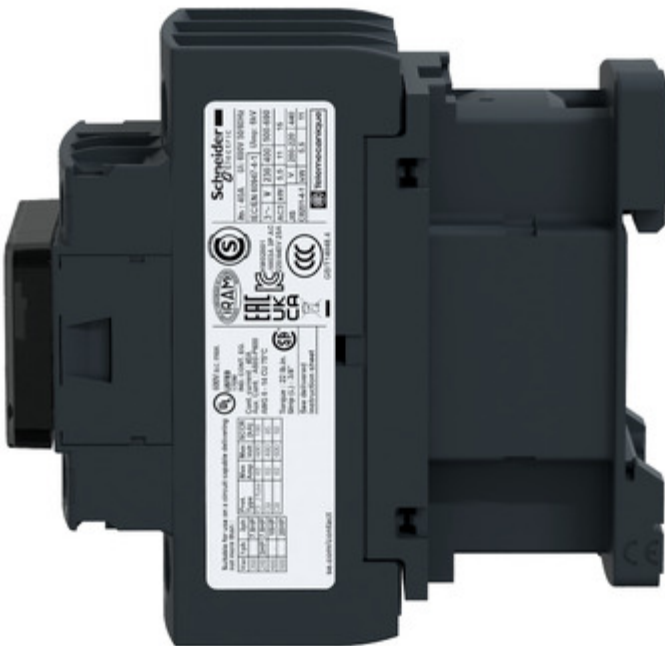
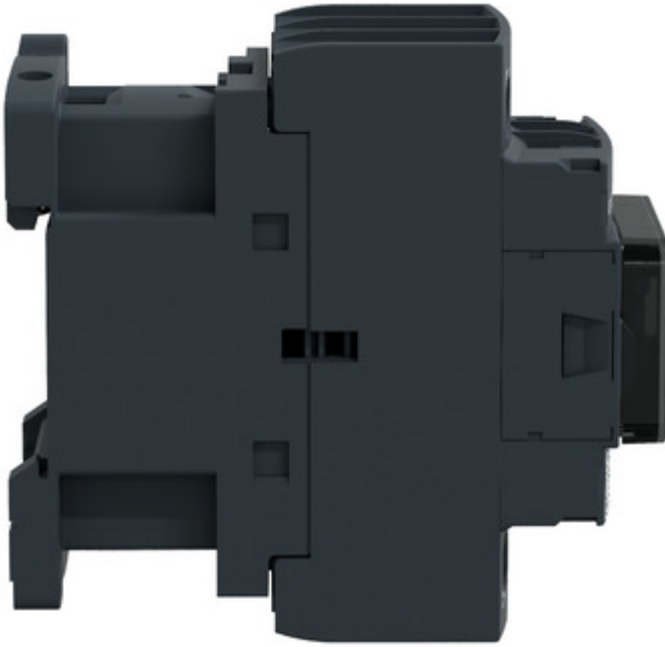
The product must be disposed on European Union markets following specific waste collection and never end up in rubbish bins

Take-back

No

Image of product / Alternate images

Alternative





Technical Illustration

Assembly's dimensions

